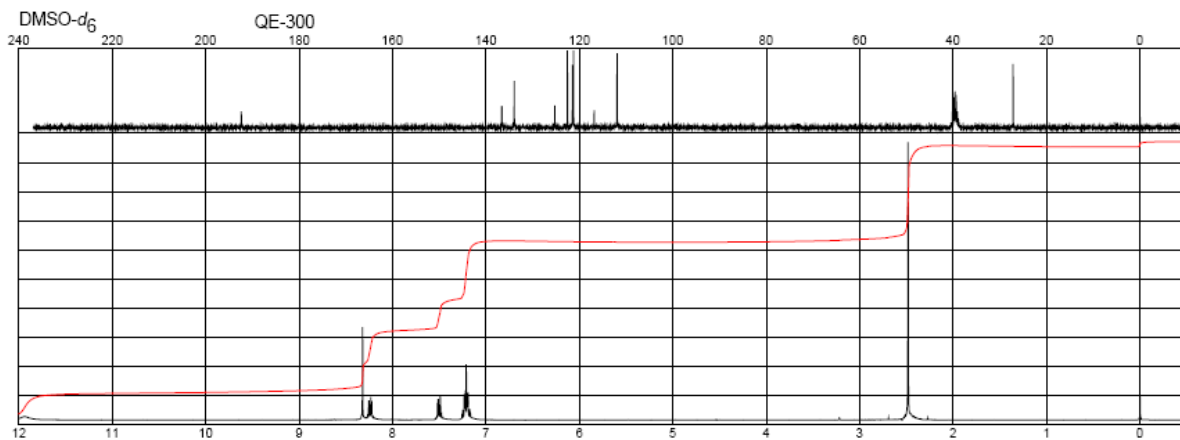
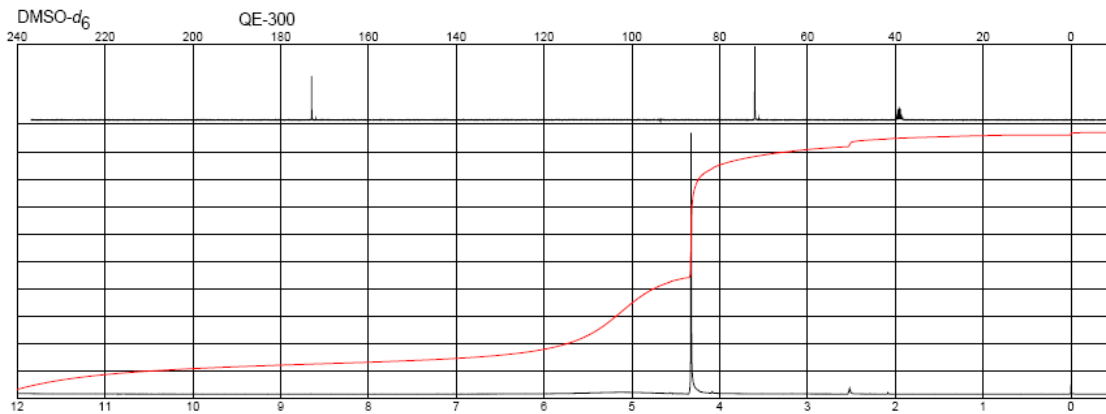
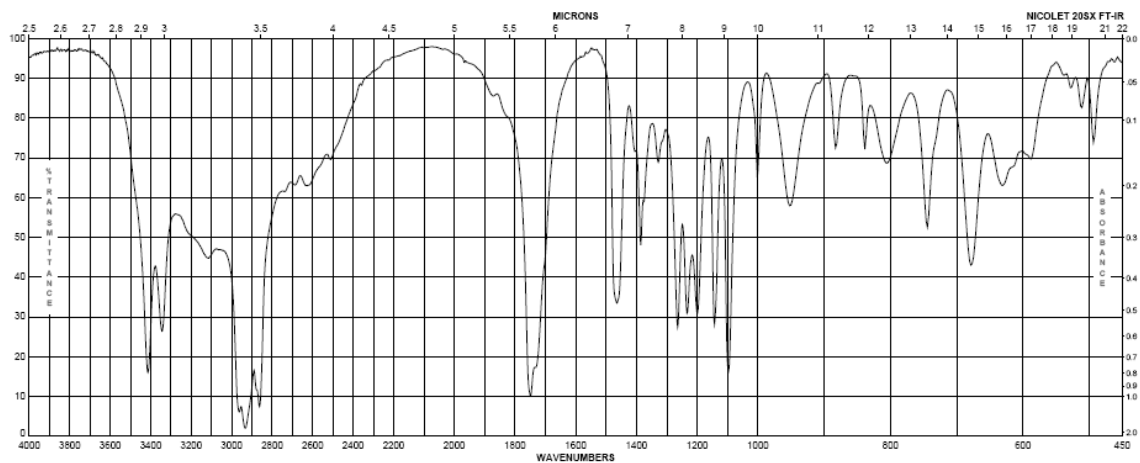


## More drill problems for structure determination

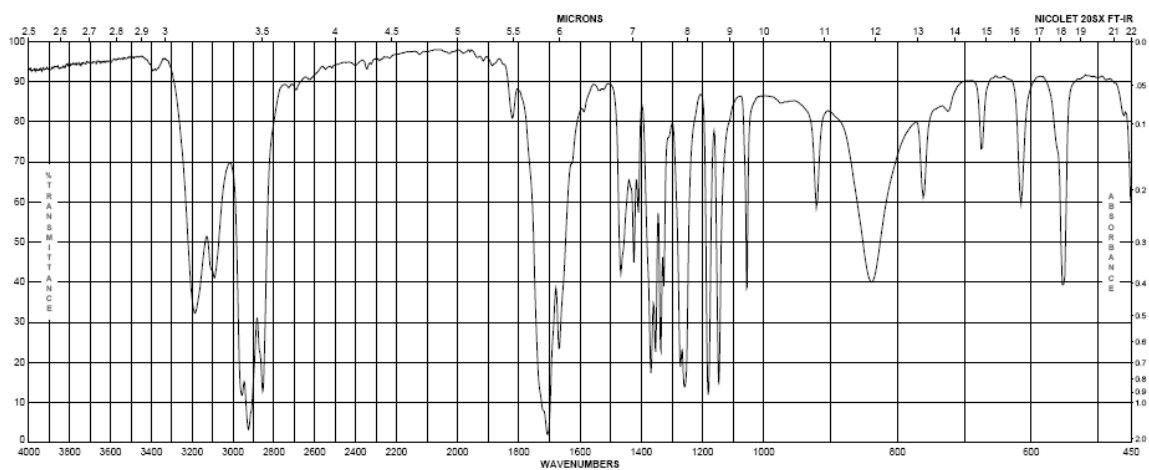
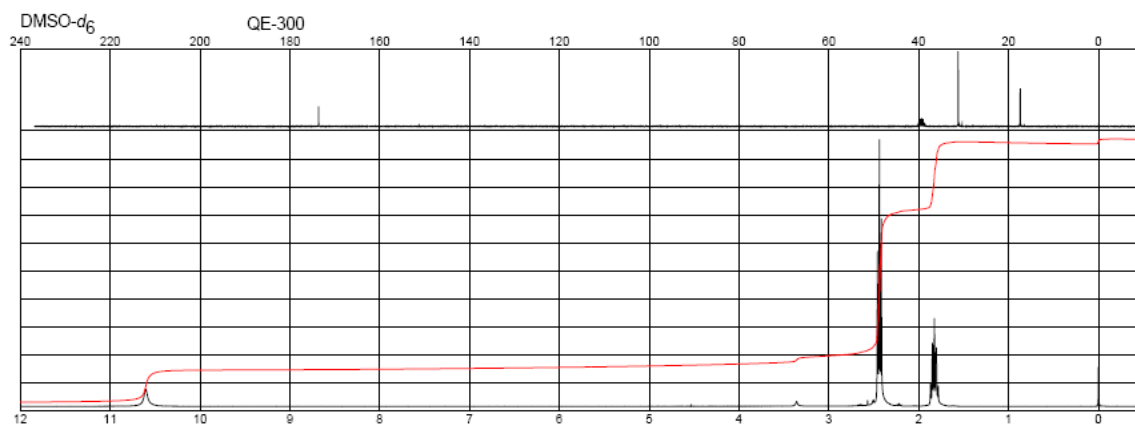
1. IR:  $1620\text{cm}^{-1}$ ,  $3000\text{-}3200\text{cm}^{-1}$   
C,75.45;H,5.70;N,8.80



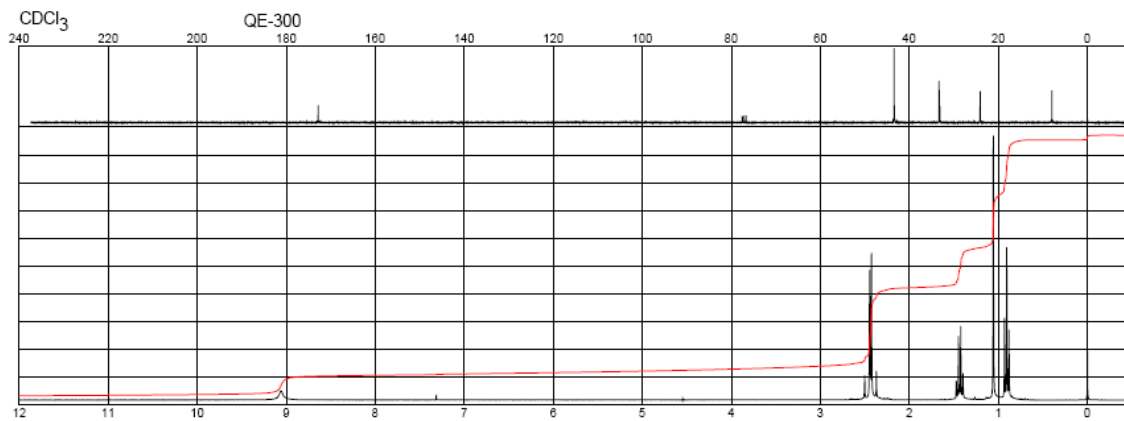
2. MW=150.09; only contains C, H and O



### 3. MW=113.115



### 4. MF= C<sub>8</sub>H<sub>13</sub>NO<sub>2</sub>, IR:3200,1710,1690cm<sup>-1</sup>



5. Exact Mass: 109.53 (Most abundant peak)

