

MIT OpenCourseWare  
<http://ocw.mit.edu>

6.641 Electromagnetic Fields, Forces, and Motion, Spring 2005

Please use the following citation format:

Markus Zahn, *6.641 Electromagnetic Fields, Forces, and Motion, Spring 2005*. (Massachusetts Institute of Technology: MIT OpenCourseWare).  
<http://ocw.mit.edu> (accessed MM DD, YYYY). License: Creative Commons Attribution-Noncommercial-Share Alike.

Note: Please use the actual date you accessed this material in your citation.

For more information about citing these materials or our Terms of Use, visit:  
<http://ocw.mit.edu/terms>

6.641, Electromagnetic Fields, Forces, and Motion  
 Prof. Markus Zahn  
**Lecture 14: Fields and Moving Media**

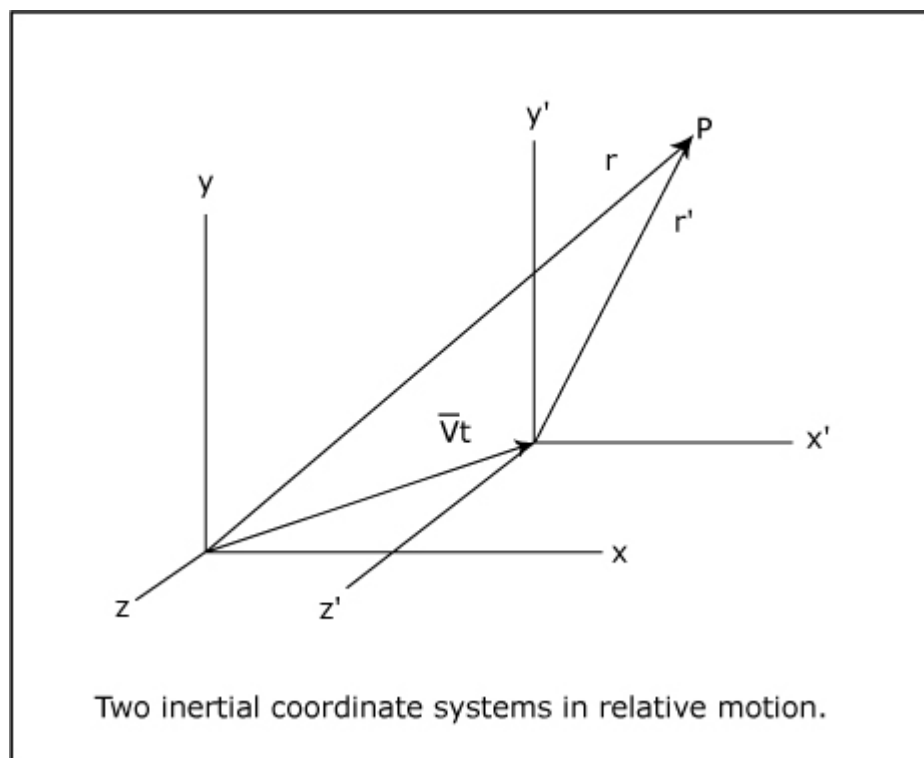
I. Galilean Time and Space Transformations

$$t = t', \quad \bar{\mathbf{r}}' = \bar{\mathbf{r}} - \bar{\mathbf{v}} t$$

$$x' = x - v_x t$$

$$y' = y - v_y t$$

$$z' = z - v_z t$$



$$\nabla = \bar{i}_x \frac{\partial}{\partial x} + \bar{i}_y \frac{\partial}{\partial y} + \bar{i}_z \frac{\partial}{\partial z}$$

$$\nabla' = \bar{i}_x \frac{\partial}{\partial x'} + \bar{i}_y \frac{\partial}{\partial y'} + \bar{i}_z \frac{\partial}{\partial z'}$$

$$\nabla' f' = \bar{i}_x \frac{\partial f'}{\partial x'} + \bar{i}_y \frac{\partial f'}{\partial y'} + \bar{i}_z \frac{\partial f'}{\partial z'} \quad (f'(x', y', z', t'))$$

$$\left. \frac{\partial f'}{\partial x} \right|_{y,z,t} = \underbrace{\frac{\partial f'}{\partial x'} \frac{\partial x'}{\partial x}}_1 + \cancel{\frac{\partial f'}{\partial y'} \frac{\partial y'}{\partial x}}^0 + \cancel{\frac{\partial f'}{\partial z'} \frac{\partial z'}{\partial x}}^0 + \cancel{\frac{\partial f'}{\partial t'} \frac{\partial t'}{\partial x}}^0 \quad (f'(x, y, z, t))$$

$$\left. \frac{\partial f'}{\partial x} \right|_{y,z,t} = \left. \frac{\partial f'}{\partial x'} \right|_{y',z',t'} \quad , \quad \left. \frac{\partial f'}{\partial y} \right|_{x,z,t} = \left. \frac{\partial f'}{\partial y'} \right|_{x',z',t'} \quad , \quad \left. \frac{\partial f'}{\partial z} \right|_{x,y,t} = \left. \frac{\partial f'}{\partial z'} \right|_{x',y',t'}$$

$$\nabla' f' = \nabla f'$$

$$\nabla' \cdot \bar{A}' = \nabla \cdot \bar{A}'$$

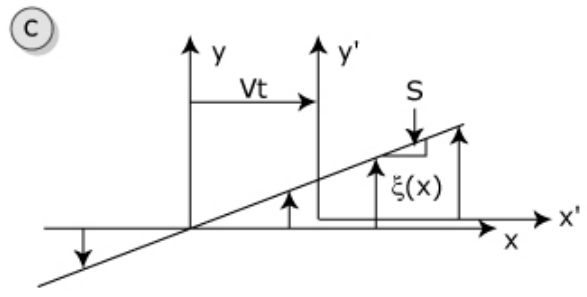
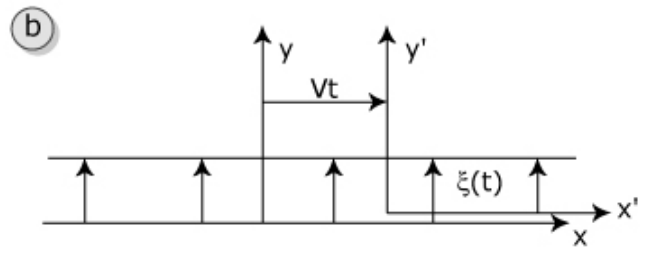
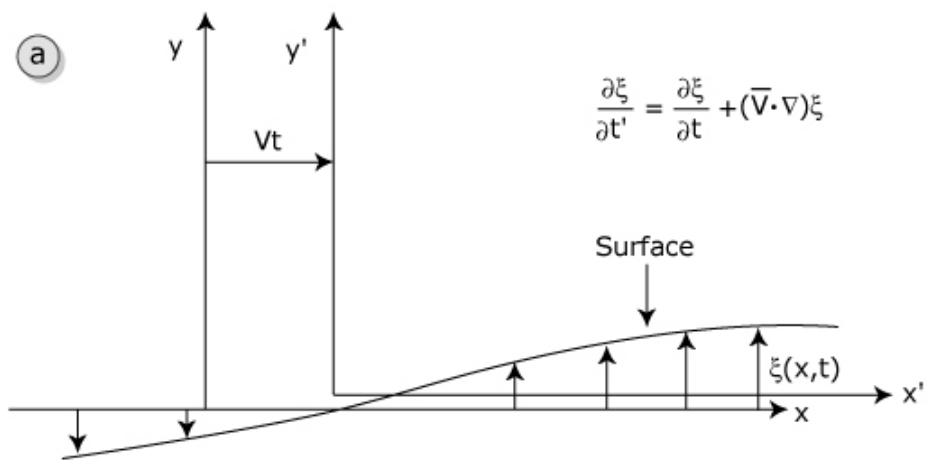
$$\nabla' \times \bar{A}' = \nabla \times \bar{A}'$$

$$\left. \frac{\partial f'}{\partial t} \right|_{x,y,z} = \underbrace{\frac{\partial f'}{\partial t'} \frac{\partial t'}{\partial t}}_1 + \underbrace{\frac{\partial f'}{\partial x'} \frac{\partial x'}{\partial t}}_{-v_x} + \underbrace{\frac{\partial f'}{\partial y'} \frac{\partial y'}{\partial t}}_{-v_y} + \underbrace{\frac{\partial f'}{\partial z'} \frac{\partial z'}{\partial t}}_{-v_z}$$

$$\begin{aligned} \left. \frac{\partial f'}{\partial t} \right|_{x,y,z} &= \frac{\partial f'}{\partial t'} - v_x \frac{\partial f'}{\partial x'} - v_y \frac{\partial f'}{\partial y'} - v_z \frac{\partial f'}{\partial z'} \\ &= \frac{\partial f'}{\partial t'} - (\bar{v} \cdot \nabla') f' = \frac{\partial f'}{\partial t'} - (\bar{v} \cdot \nabla) f' \end{aligned}$$

$$\frac{\partial f'}{\partial t'} = \frac{\partial f'}{\partial t} + (\bar{v} \cdot \nabla) f'$$

$$\frac{\partial \bar{A}'}{\partial t'} = \frac{\partial \bar{A}'}{\partial t} + (\bar{v} \cdot \nabla) \bar{A}'$$



(a) A surface described by  $y = \xi(x, t)$  has an elevation above the  $x$ - $z$  plane which is the same whether viewed from the moving (primed) frame or the fixed frame ( $\xi' = \xi$ ); (b)  $\xi$  is independent of position so that only the first term makes a contribution to  $\partial \xi / \partial t'$ ; (c)  $\xi$  is independent of time and only the second term makes a contribution to  $\partial \xi / \partial t'$ .

## II. Transformations for MQS Systems

$$\nabla \times \bar{H} = \bar{J}_f$$

$$\nabla' \times \bar{H}' = \bar{J}'_f$$

$$\nabla \cdot \bar{B} = 0$$

$$\nabla' \cdot \bar{B}' = 0$$

$$\nabla \cdot \bar{J}_f = 0$$

$$\nabla' \cdot \bar{J}'_f = 0$$

$$\nabla \times \bar{E} = -\frac{\partial \bar{B}}{\partial t}$$

$$\nabla' \times \bar{E}' = -\frac{\partial \bar{B}'}{\partial t'} = -\frac{\partial \bar{B}'}{\partial t} - (\bar{v} \cdot \nabla) \bar{B}'$$

$$\bar{B} = \mu_0 (\bar{H} + \bar{M})$$

$$\bar{B}' = \mu_0 (\bar{H}' + \bar{M}')$$

Useful vector identity:

$$\nabla \times (\bar{a} \times \bar{b}) = (\bar{b} \cdot \nabla) \bar{a} - (\bar{a} \cdot \nabla) \bar{b} + \bar{a} (\nabla \cdot \bar{b}) - \bar{b} (\nabla \cdot \bar{a})$$

Take  $\bar{a} = \bar{v}$ , (Constant Vector),  $\bar{b} = \bar{B}'$

$$\nabla \times (\bar{v} \times \bar{B}') = \underbrace{(\bar{B}' \cdot \nabla) \bar{v}}_{\bar{v} \text{ is constant}} - (\bar{v} \cdot \nabla) \bar{B}' + \underbrace{\bar{v} (\nabla \cdot \bar{B}')}_{\text{Gauss' Law}} - \underbrace{\bar{B}' (\nabla \cdot \bar{v})}_{\bar{v} \text{ is constant}}$$

$$\nabla \times (\bar{v} \times \bar{B}') = -(\bar{v} \cdot \nabla) \bar{B}'$$

$$\nabla \times \bar{E}' = -\frac{\partial \bar{B}'}{\partial t} + \nabla \times (\bar{v} \times \bar{B}') \Rightarrow \nabla \times (\underbrace{\bar{E}' - \bar{v} \times \bar{B}'}_{\bar{E}}) = -\frac{\partial \bar{B}'}{\partial t}$$

$$\bar{H}' = \bar{H}$$

$$\bar{B}' = \bar{B}$$

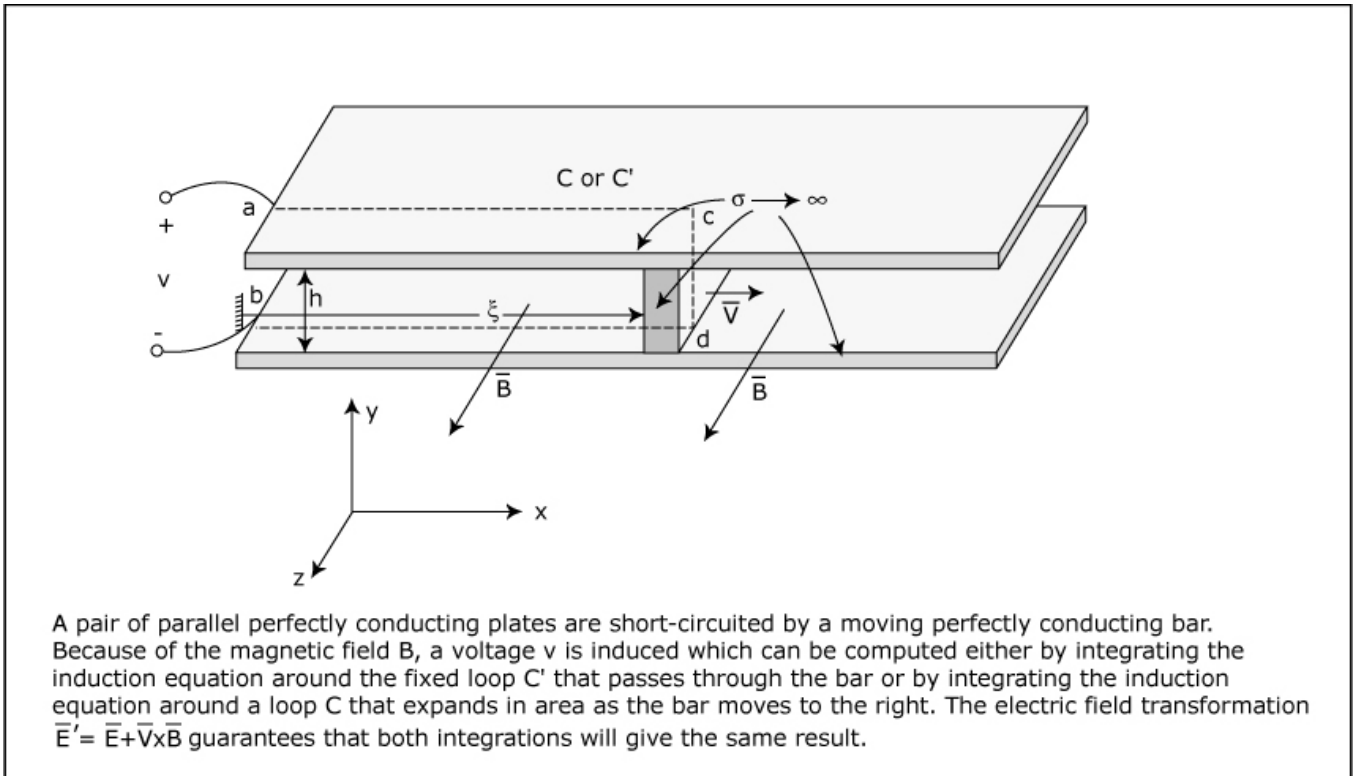
$$\bar{J}'_f = \bar{J}_f$$

$$\bar{E}' = \bar{E} + \bar{v} \times \bar{B}$$

$$\bar{M}' = \bar{M}$$

$$\text{Note: } \bar{f} = q(\bar{E} + \bar{v} \times \bar{B}) = q\bar{E}' = \bar{f}'$$

### III. Moving Media MQS Problem



#### Moving Contour $C$

$$\oint_C \vec{E}' \cdot d\vec{l} = -\frac{d}{dt} \int_S \vec{B} \cdot \vec{n} da$$

$$-v = -\frac{d}{dt} [-Bh\xi]$$

$\vec{B}$  and  $\vec{n}$  in opposite directions

$$v = -Bh \frac{d\xi}{dt} = -BhV$$

#### Stationary Contour $C'$

$$\oint_{C'} \vec{E} \cdot d\vec{l} = -\frac{d}{dt} \int_S \vec{B} \cdot \vec{n} da = 0$$

$$\vec{E}' = 0 = \vec{E} + \vec{v} \times \vec{B} \text{ in moving perfect conductor}$$

$$-v + (\vec{v} \times \vec{B})_y h = 0$$

$$v = -BhV$$

#### IV. Transformations for EQS Systems

$$\nabla \times \bar{\mathbf{E}} = 0$$

$$\nabla' \times \bar{\mathbf{E}}' = 0$$

$$\nabla \cdot \bar{\mathbf{D}} = \rho_f$$

$$\nabla' \cdot \bar{\mathbf{D}}' = \rho_f'$$

$$\nabla \cdot \bar{\mathbf{J}}_f = -\frac{\partial \rho_f}{\partial t}$$

$$\nabla' \cdot \bar{\mathbf{J}}_f' = -\frac{\partial \rho_f'}{\partial t'}$$

$$\nabla \times \bar{\mathbf{H}} = \bar{\mathbf{J}}_f + \frac{\partial \bar{\mathbf{D}}}{\partial t}$$

$$\nabla' \times \bar{\mathbf{H}}' = \bar{\mathbf{J}}_f' + \frac{\partial \bar{\mathbf{D}}'}{\partial t'}$$

$$\bar{\mathbf{D}} = \epsilon_0 \bar{\mathbf{E}} + \bar{\mathbf{P}}$$

$$\bar{\mathbf{D}}' = \epsilon_0 \bar{\mathbf{E}}' + \bar{\mathbf{P}}'$$

$$\nabla \times \bar{\mathbf{E}}' = 0$$

$$\nabla \cdot \bar{\mathbf{D}}' = \rho_f'$$

$$\nabla \cdot \bar{\mathbf{J}}_f' = -\frac{\partial \rho_f'}{\partial t'} - (\bar{\mathbf{v}} \cdot \nabla) \rho_f'$$

$$\nabla \times \bar{\mathbf{H}}' = \bar{\mathbf{J}}_f' + \frac{\partial \bar{\mathbf{D}}'}{\partial t'} + (\bar{\mathbf{v}} \cdot \nabla) \bar{\mathbf{D}}'$$

$$\nabla \times (\bar{\mathbf{v}} \times \bar{\mathbf{D}}') = \underbrace{(\bar{\mathbf{D}}' \cdot \nabla)}_0 \bar{\mathbf{v}} - (\bar{\mathbf{v}} \cdot \nabla) \bar{\mathbf{D}}' + \underbrace{\bar{\mathbf{v}} (\nabla \cdot \bar{\mathbf{D}}')}_{\rho_f'} - \bar{\mathbf{D}}' (\nabla \cdot \bar{\mathbf{v}})$$

$$(\bar{\mathbf{v}} \cdot \nabla) \bar{\mathbf{D}}' = \rho_f' \bar{\mathbf{v}} - \nabla \times (\bar{\mathbf{v}} \times \bar{\mathbf{D}}')$$

$$\nabla \times \bar{\mathbf{H}}' = \bar{\mathbf{J}}_f' + \frac{\partial \bar{\mathbf{D}}'}{\partial t'} + \rho_f' \bar{\mathbf{v}} - \nabla \times (\bar{\mathbf{v}} \times \bar{\mathbf{D}}')$$

$$\nabla \times (\underbrace{\bar{\mathbf{H}}' + \bar{\mathbf{v}} \times \bar{\mathbf{D}}'}_{\bar{\mathbf{H}}} = \underbrace{\bar{\mathbf{J}}_f' + \rho_f' \bar{\mathbf{v}}}_{\bar{\mathbf{J}}_f} + \frac{\partial \bar{\mathbf{D}}'}{\partial t'}$$

$$\bar{\mathbf{E}}' = \bar{\mathbf{E}}$$

$$\bar{\mathbf{D}}' = \bar{\mathbf{D}}$$

$$\rho_f' = \rho_f$$

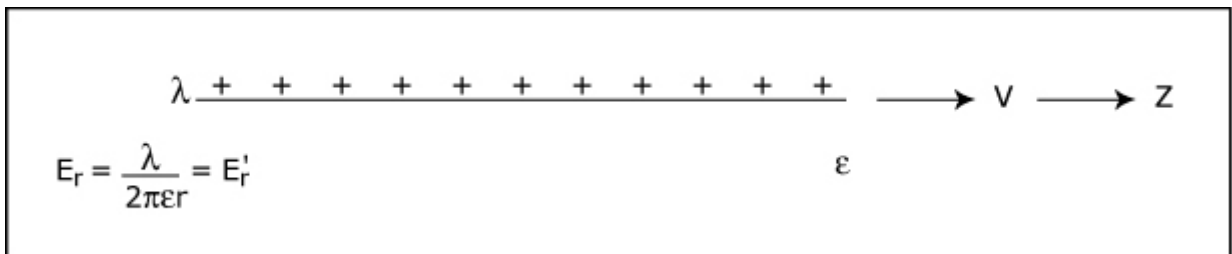
$$\bar{H}' = \bar{H} - \bar{v} \times \bar{D}'$$

$$\bar{J}' = \bar{J}_f - \rho_f \bar{v}$$

(Note:  $\nabla \cdot \bar{J}' = \nabla \cdot \bar{J}_f - \nabla \cdot (\rho_f \bar{v})$   
 $= \nabla \cdot \bar{J}_f - (\bar{v} \cdot \nabla) \rho_f - \rho_f \nabla \cdot \bar{v}$ )

$$\bar{P}' = \bar{P}$$

### V. Moving Line Charge Representation Problem



In moving frame:  $\bar{H}' = 0 \Rightarrow \bar{H} - \bar{v} \times \bar{D} = 0$

$$\bar{H} = \bar{v} \times \bar{D} = v \bar{i}_z \times \left( \frac{\lambda}{2\pi r} \bar{i}_r \right) = \frac{v\lambda}{2\pi r} \bar{i}_\phi$$

$$\bar{J}' = 0 = \bar{J}_f - \rho_f \bar{v}$$

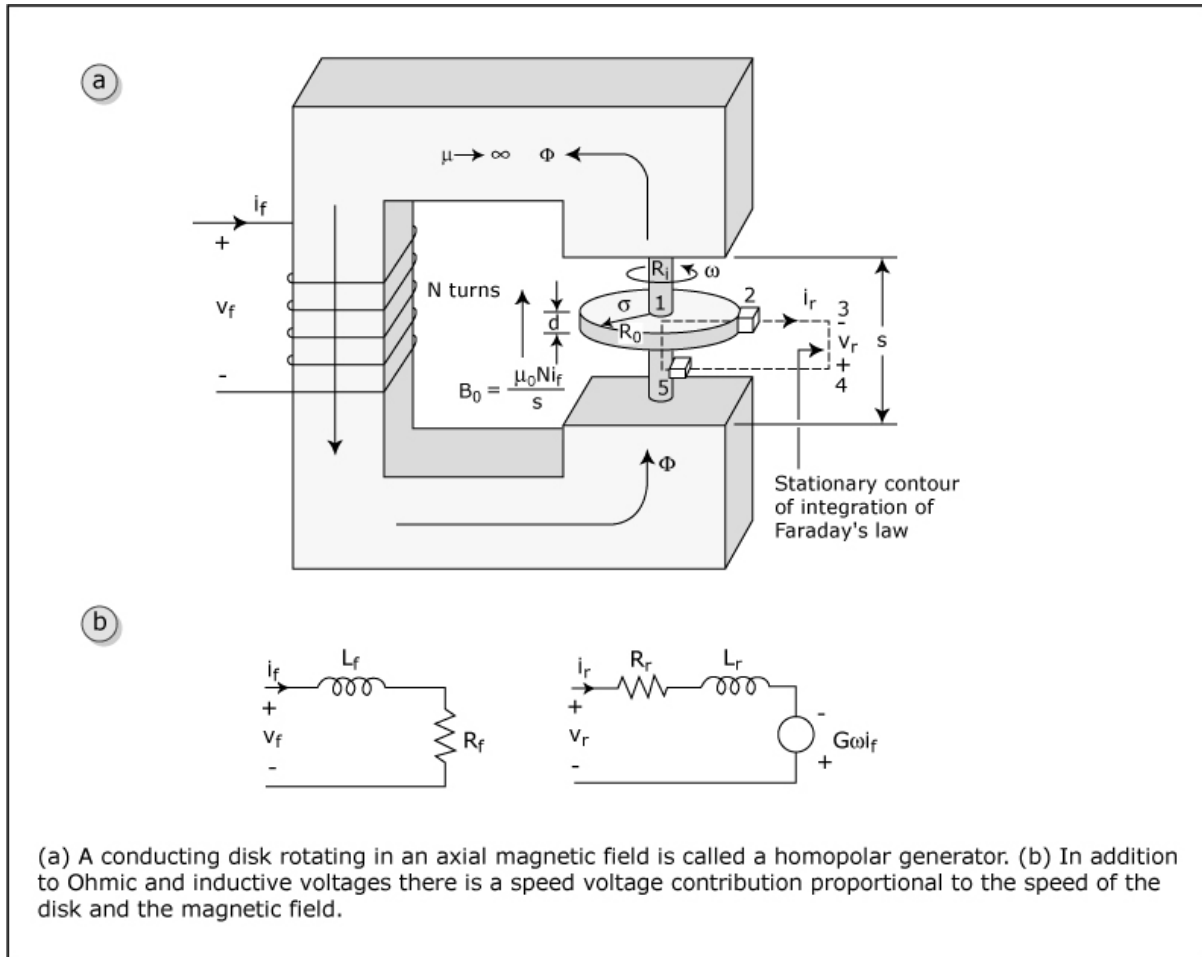
$$\lambda v = \lambda v \frac{\text{coul}}{\text{m}} \frac{\text{m}}{\text{s}} = \lambda v \text{ amperes} = I = \lambda v$$

$$H_\phi = \frac{I}{2\pi r} = \frac{\lambda v}{2\pi r}$$



	Differential Equations	Transformations	Boundary Conditions
Magnetic Field System	$\nabla \times \mathbf{H} = \mathbf{J}_f$ $\nabla \cdot \mathbf{B} = 0$ $\nabla \cdot \mathbf{J}_f = 0$ $\nabla \times \mathbf{E} = -\frac{\partial \mathbf{B}}{\partial t}$ $\mathbf{B} = \mu_0(\mathbf{H} + \mathbf{M})$	$\mathbf{H}' = \mathbf{H}$ $\mathbf{B}' = \mathbf{B}$ $\mathbf{J}'_f = \mathbf{J}_f$ $\mathbf{E}' = \mathbf{E} + \mathbf{v} \times \mathbf{B}$ $\mathbf{M}' = \mathbf{M}$	$\mathbf{n} \times (\mathbf{H}^a - \mathbf{H}^b) = \mathbf{K}_f$ $\mathbf{n} \cdot (\mathbf{B}^a - \mathbf{B}^b) = 0$ $\mathbf{n} \cdot (\mathbf{J}_f^a - \mathbf{J}_f^b) + \nabla_{\Sigma} \cdot \mathbf{K}_f = 0$ $\mathbf{n} \times (\mathbf{E}^a - \mathbf{E}^b) = \mathbf{v}_n (\mathbf{B}^a - \mathbf{B}^b)$
Electric Field System	$\nabla \times \mathbf{E} = 0$ $\nabla \times \mathbf{D} = \rho_f$ $\nabla \cdot \mathbf{J}_f = -\frac{\partial \rho_f}{\partial t}$ $\nabla \times \mathbf{H} = \mathbf{J}_f + \frac{\partial \mathbf{D}}{\partial t}$ $\mathbf{D} = \epsilon_0 \mathbf{E} + \mathbf{P}$	$\mathbf{E}' = \mathbf{E}$ $\mathbf{D}' = \mathbf{D}$ $\rho'_f = \rho_f$ $\mathbf{J}'_f = \mathbf{J}_f - \rho_f \mathbf{v}$ $\mathbf{H}' = \mathbf{H} - \mathbf{v} \times \mathbf{D}$ $\mathbf{P}' = \mathbf{P}$	$\mathbf{n} \times (\mathbf{E}^a - \mathbf{E}^b) = 0$ $\mathbf{n} \cdot (\mathbf{D}^a - \mathbf{D}^b) = \sigma_f$ $\mathbf{n} \cdot (\mathbf{J}_f^a - \mathbf{J}_f^b) + \nabla_{\Sigma} \cdot \mathbf{K}_f = \mathbf{v}_n (\rho_f^a - \rho_f^b) - \frac{\partial \sigma_f}{\partial t}$ $\mathbf{n} \times (\mathbf{H}^a - \mathbf{H}^b) = \mathbf{K}_f + \mathbf{v}_n \mathbf{n} \times [\mathbf{n} \times (\mathbf{D}^a - \mathbf{D}^b)]$

## VI. Faraday's Disk (Homopolar Generator)



(a) A conducting disk rotating in an axial magnetic field is called a homopolar generator. (b) In addition to Ohmic and inductive voltages there is a speed voltage contribution proportional to the speed of the disk and the magnetic field.

$$B_o = \frac{\mu_o N i_f}{s}$$

$$\vec{J} = \sigma(\vec{E} + \vec{v} \times \vec{B}) \Rightarrow \vec{E} = \frac{\vec{J}}{\sigma} - \vec{v} \times \vec{B} \Rightarrow E_r = \frac{i_r}{2\pi\sigma dr} - \omega r B_o$$

$$\oint_L \vec{E} \cdot d\vec{l} = \int_1^2 E_r dr + \underbrace{\int_3^4 \vec{E} \cdot d\vec{l}}_{-v_r} = 0$$

$$v_r = \int_1^2 E_r dr = \int_{R_i}^{R_o} \left( \frac{i_r}{2\pi\sigma dr} - \omega r B_o \right) dr = \frac{i_r}{2\pi\sigma d} \ln \frac{R_o}{R_i} - \frac{\omega B_o}{2} (R_o^2 - R_i^2)$$

$$= i_r R_r - G \omega i_f$$

$$R_r = \frac{\ln \frac{R_0}{R_i}}{2\pi\sigma d}, \quad G = \frac{\mu_0 N}{2s} (R_0^2 - R_i^2)$$

Representative Numbers: copper ( $\sigma \approx 6 \times 10^7$  Siemen / m),  $d = 1$  mm

$$\omega = 3600 \text{ rpm} = 120 \pi \text{ rad / s}$$

$$R_0 = 10 \text{ cm}, R_i = 1 \text{ cm}, B_0 = 1 \text{ tesla}$$

$$v_{0c} = \frac{-\omega B_0}{2} (R_0^2 - R_i^2) \approx -1.9 \text{ V}$$

$$i_{sc} = \frac{v_{0c} 2\pi\sigma d}{\ln \left( \frac{R_0}{R_i} \right)} \approx 3 \times 10^5 \text{ amp}$$

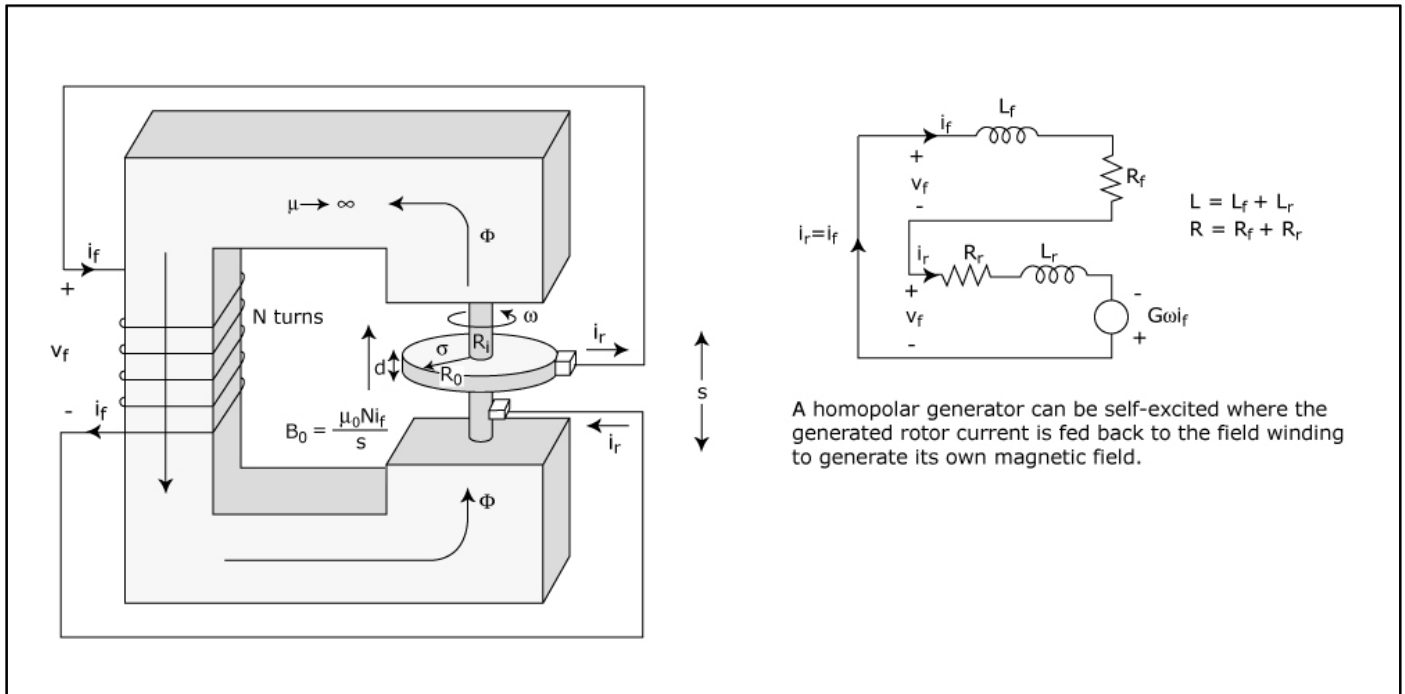
$$T = \int_{\phi=0}^{2\pi} \int_{z=0}^d \int_{r=R_i}^{R_0} r \mathbf{i}_r \times (\bar{\mathbf{J}} \times \bar{\mathbf{B}}) r \, dr \, d\phi \, dz$$

$$= -i_r B_0 \bar{i}_z \int_{R_i}^{R_0} r \, dr$$

$$= \frac{-i_r B_0}{2} (R_0^2 - R_i^2) \bar{i}_z$$

$$= -G i_f i_r \bar{i}_z$$

## VII. Self-Excited DC Homopolar Generator



$$i_f = i_r \equiv i$$

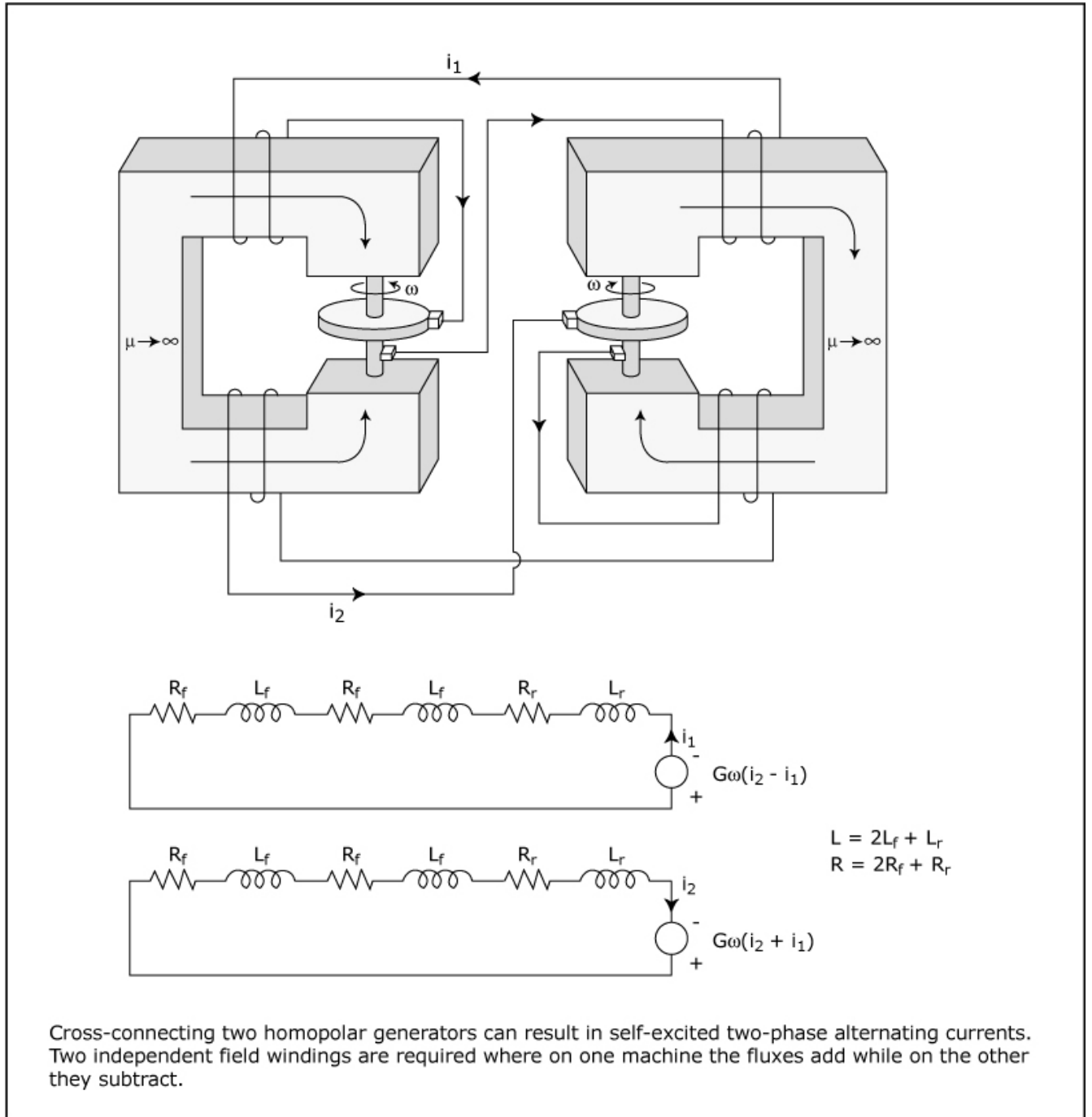
$$L \frac{di}{dt} + i(R - G\omega) = 0 ; \quad R = R_r + R_f$$

$$L = L_r + L_f$$

$$i(t) = I_0 e^{-[R-G\omega]t/L}$$

$$G\omega > R \quad \text{Self-Excited}$$

### VIII. Self-Excited AC Homopolar Generator



$$L \frac{di_1}{dt} + (R - G\omega)i_1 + G\omega i_2 = 0$$

$$L \frac{di_2}{dt} + (R - G\omega)i_2 - G\omega i_1 = 0$$

$$i_1 = I_1 e^{st}, \quad i_2 = I_2 e^{st}$$

$$(Ls + R - G\omega)I_1 + G\omega I_2 = 0$$

$$-G\omega I_1 + (Ls + R - G\omega)I_2 = 0$$

$$(Ls + R - G\omega)^2 + (G\omega)^2 = 0$$

$$Ls + R - G\omega = \pm jG\omega$$

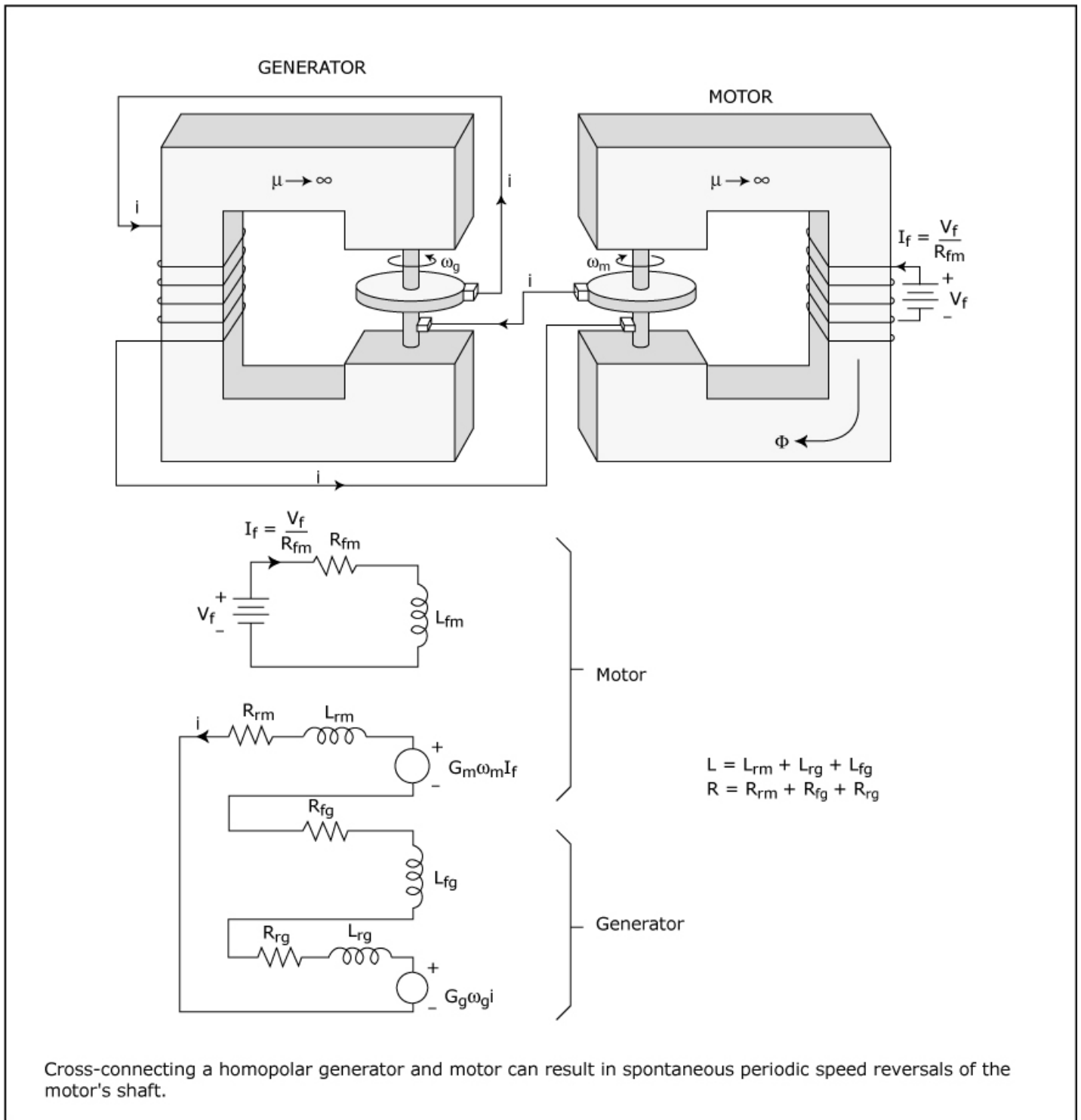
$$s = -\frac{(R - G\omega)}{L} \pm j\frac{G\omega}{L}$$

$$\frac{I_1}{I_2} = \frac{-G\omega}{(Ls + R - G\omega)} = \pm j$$

Self Excited:  $G\omega > R$

Oscillation frequency:  $\omega_0 = \text{Im}(s) = G\omega/L$

## IX. Self-Excited Periodic Motor Speed Reversals



$$\frac{di}{dt} + \frac{(R - G_g \omega_g)}{L} i = \frac{G_m \omega_m I_f}{L}$$

$$J \frac{d\omega_m}{dt} = -G_m I_f i$$

$$i = I e^{st}, \omega_m = W e^{st}$$

$$I \left[ s + \frac{R - G_g \omega_g}{L} \right] - W \left( \frac{G_m I_f}{L} \right) = 0$$

$$I \left( \frac{G_m I_f}{J} \right) + W s = 0$$

$$s \left[ s + \frac{R - G_g \omega_g}{L} \right] + \frac{(G_m I_f)^2}{JL} = 0$$

$$s = -\frac{(R - G_g \omega_g)}{2L} \pm \left[ \left( \frac{R - G_g \omega_g}{2L} \right)^2 - \frac{(G_m I_f)^2}{JL} \right]^{1/2}$$

Self-excitation:  $G_g \omega_g > R$

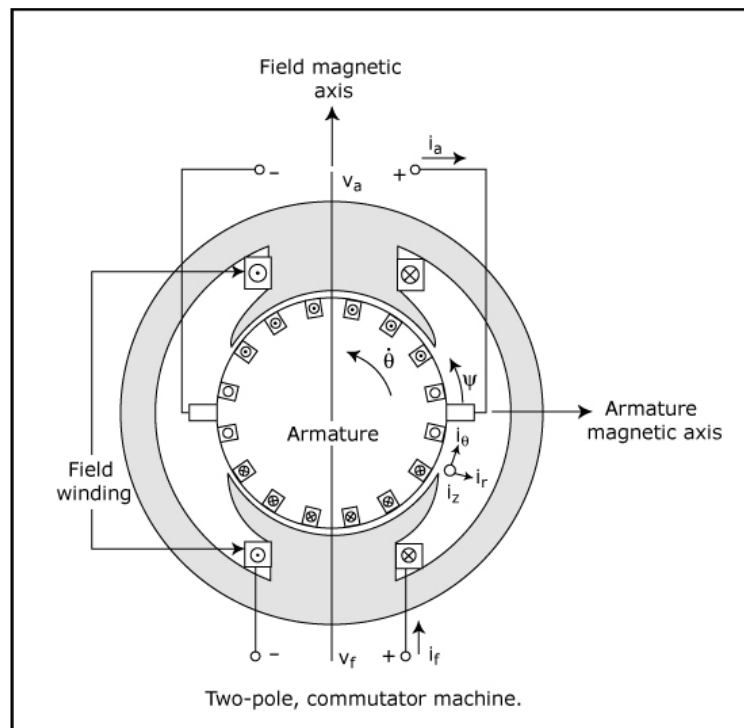
Oscillations if  $s$  has an imaginary part:

$$\frac{(G_m I_f)^2}{JL} > \left( \frac{R - G_g \omega_g}{2L} \right)^2$$

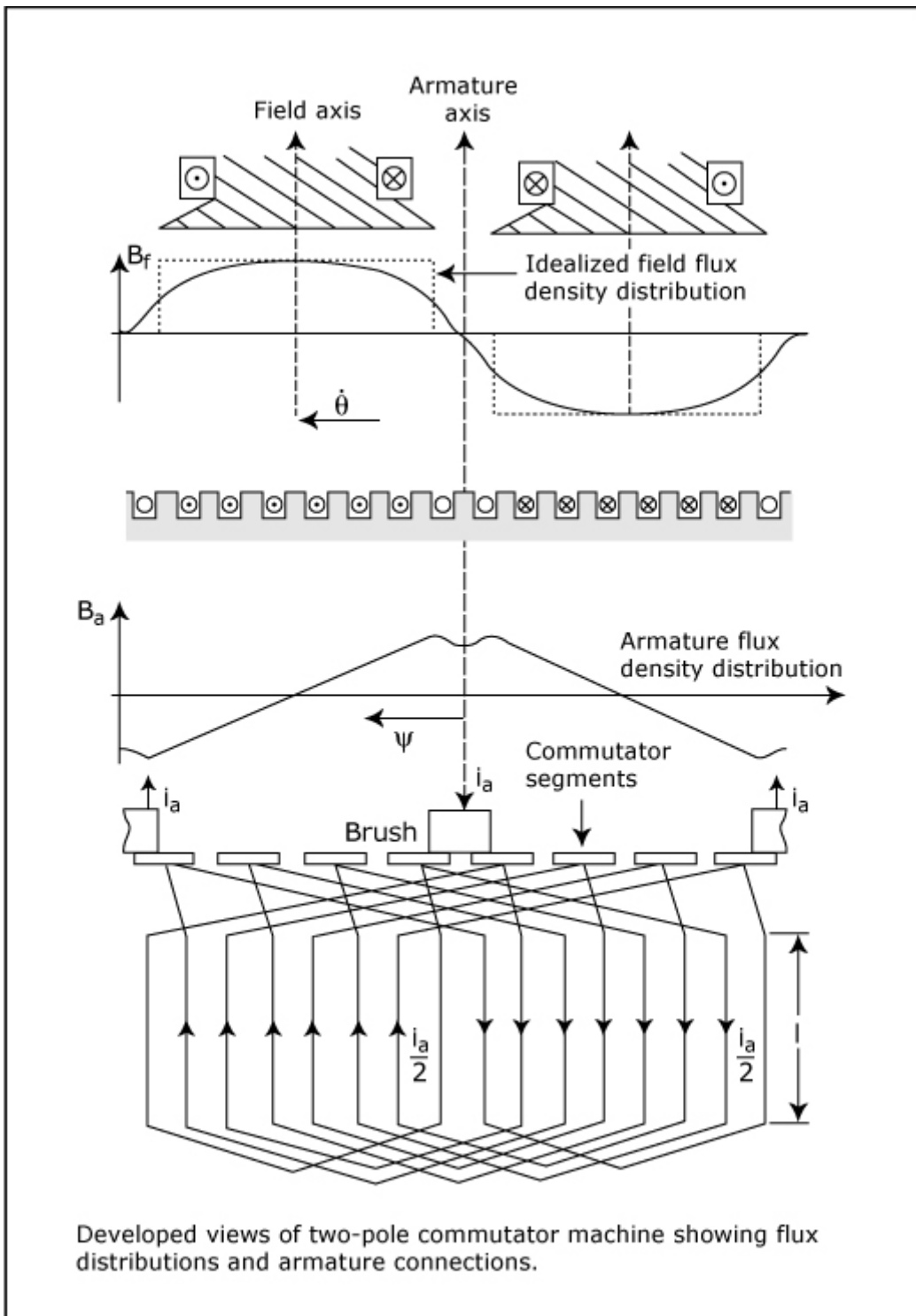
## X. DC Commutator Machines

### Quasi-One Dimensional Description

#### A. Electrical Equations

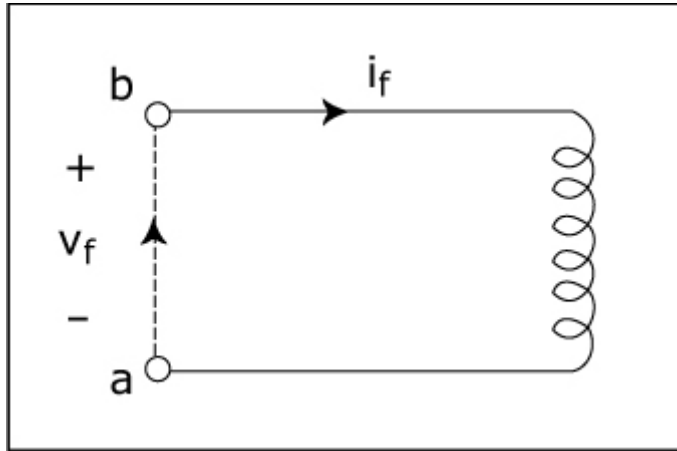






$$\oint_c \bar{E} \cdot d\bar{l} = -\frac{d}{dt} \int_s \bar{B} \cdot \bar{n} da$$

## 1. Field Winding



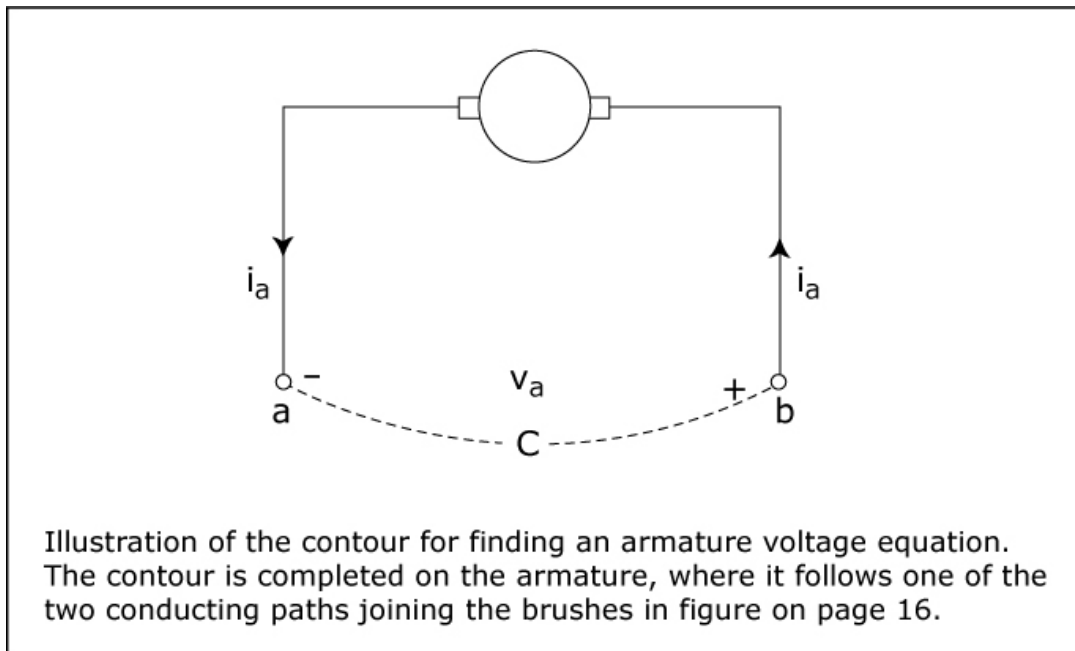
$$\oint_C \vec{E} \cdot d\vec{l} = -v_f + \int_{\text{winding}} \frac{i_f}{A\sigma} dl = -v_f + i_f \underbrace{R_f}_{\substack{\text{Resistance of field winding} \\ \frac{J}{\sigma}}}$$

$$\lambda_f = \int_S \vec{B} \cdot \vec{n} da = L_f i_f$$

$$-v_f + i_f R_f = -L_f \frac{di_f}{dt}$$

$$v_f = L_f \frac{di_f}{dt} + i_f R_f$$

## 2. Armature Winding



$$\text{Reminder: } \vec{f} = q(\vec{E} + \vec{v} \times \vec{B}) = q\vec{E}'$$

$$\vec{E}' = \vec{E} + \vec{v} \times \vec{B}$$

Take Stationary Contour through armature winding

$$\vec{E} = \vec{E}' - \vec{v} \times \vec{B}$$

$$\oint_C \vec{E} \cdot d\vec{l} = -v_a + \int (\vec{E}' - \vec{v} \times \vec{B}) \cdot d\vec{l}$$

$$= -v_a + \int_a^b \left( \frac{i_a}{A\sigma} + \omega R B_r \bar{i}_z \right) \cdot d\vec{l} ; \quad v = \omega R \bar{i}_0$$

$$\vec{B} = \bar{i}_r B_r(\chi)$$

$$= -v_a + i_a R_a + \omega R (B_{rf})_{av} l N$$

$$= -\frac{d}{dt} \int_S \vec{B} \cdot d\vec{a} = -L_a \frac{di_a}{dt}$$

$$v_a = i_a R_a + L_a \frac{di_a}{dt} + G \omega i_f \quad (G i_f = l N R (B_{rf})_{av})$$

## B. Mechanical Equations

$$\vec{F} = \bar{i}_0 J_z B_r = \bar{i}_0 \frac{i_a}{A_w} B_r, \quad \vec{f} = \vec{F} A_w l = \bar{i}_0 i_a l B_r$$

$$T = f R = i_a l B_r R N = G i_f i_a$$

$$J \frac{d^2\theta}{dt^2} = T = G i_f i_a$$

## C. Linear Amplifier

### 1) Open Circuit

$$v_f = V_f, i_a = 0 \Rightarrow i_f = V_f / R_f$$

$$v_a = G \omega V_f / R_f$$

### 2) Resistively Loaded Armature (DC Generator)

$$v_a = -i_a R_L = i_a R_a + G \omega V_f / R_f$$

$$i_a = \frac{-G \omega V_f}{R_f (R_a + R_L)}$$

$$v_a = \frac{G \omega V_f R_L}{R_f (R_a + R_L)}$$

#### D. DC Motors

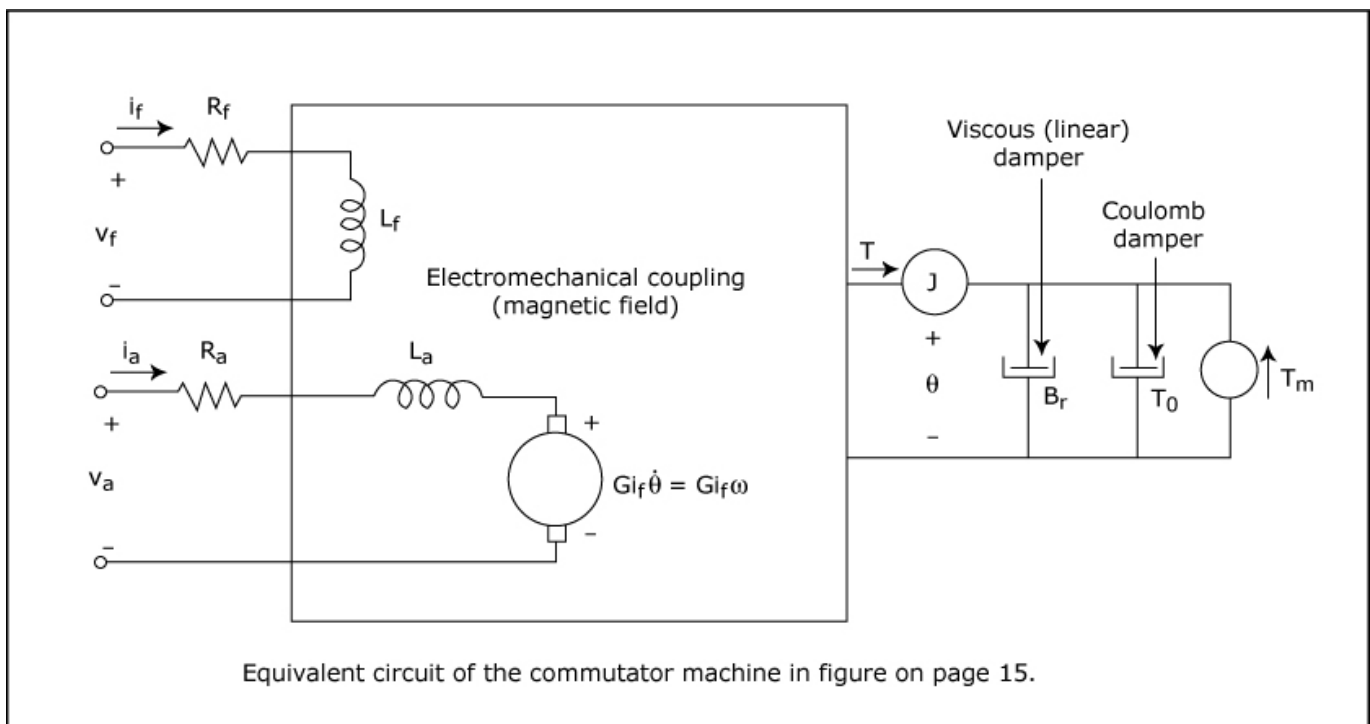
1) Shunt Excitation:  $v_a = v_f = v_t$

$$v_t = i_f R_f = i_a R_a + G \omega i_f$$

$$i_f (R_f - G \omega) = i_a R_a$$

$$i_f = \frac{V_t}{R_f}, \quad i_a = \frac{V_t (R_f - G \omega)}{R_a}$$

$$T = G i_f i_a = G \left( \frac{V_t}{R_f} \right)^2 \frac{(R_f - G \omega)}{R_a}$$



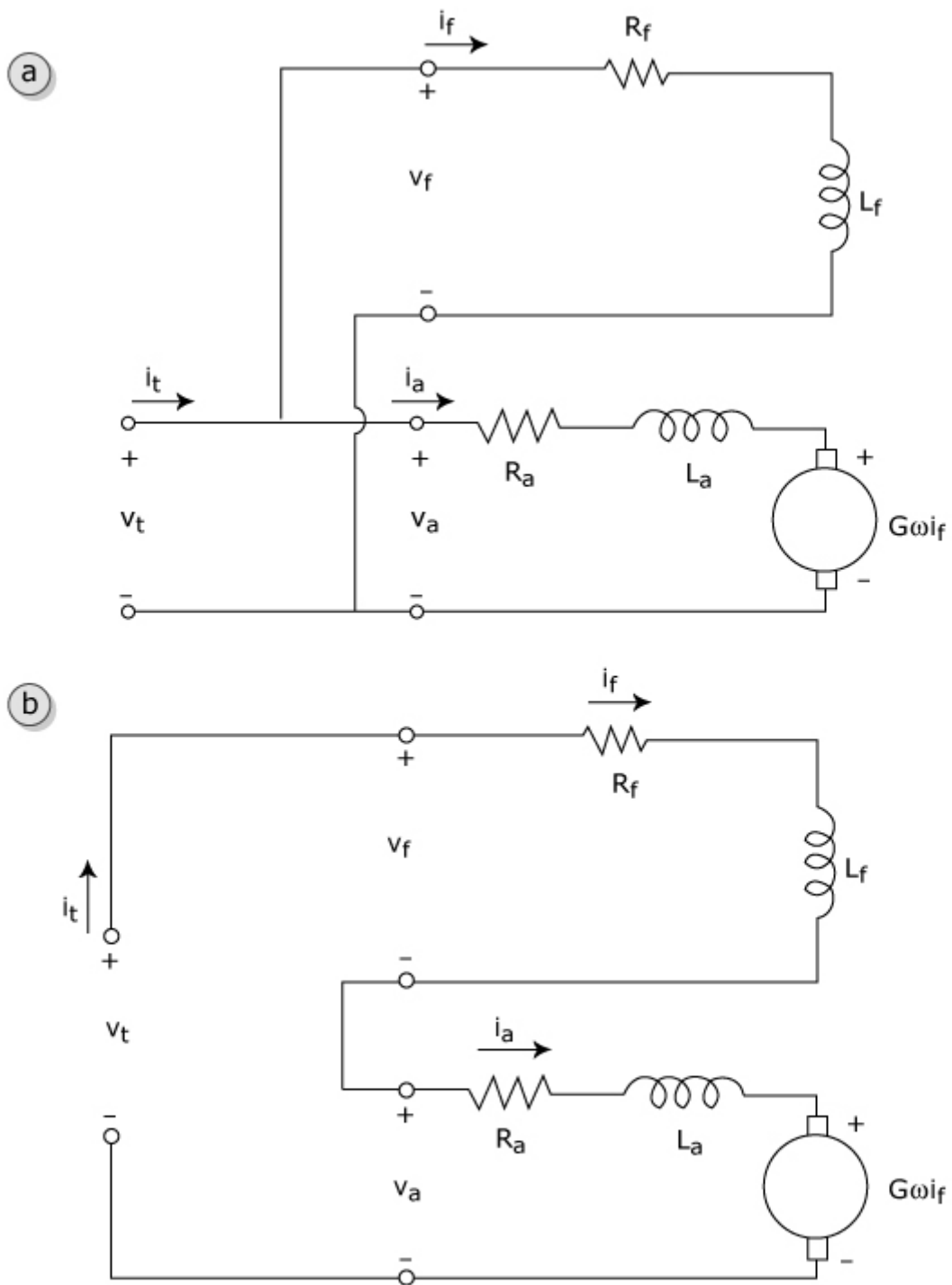
2) Series:  $i_a = i_f = i_t$

$$i_t (R_f + R_a + G\omega) = v_t$$

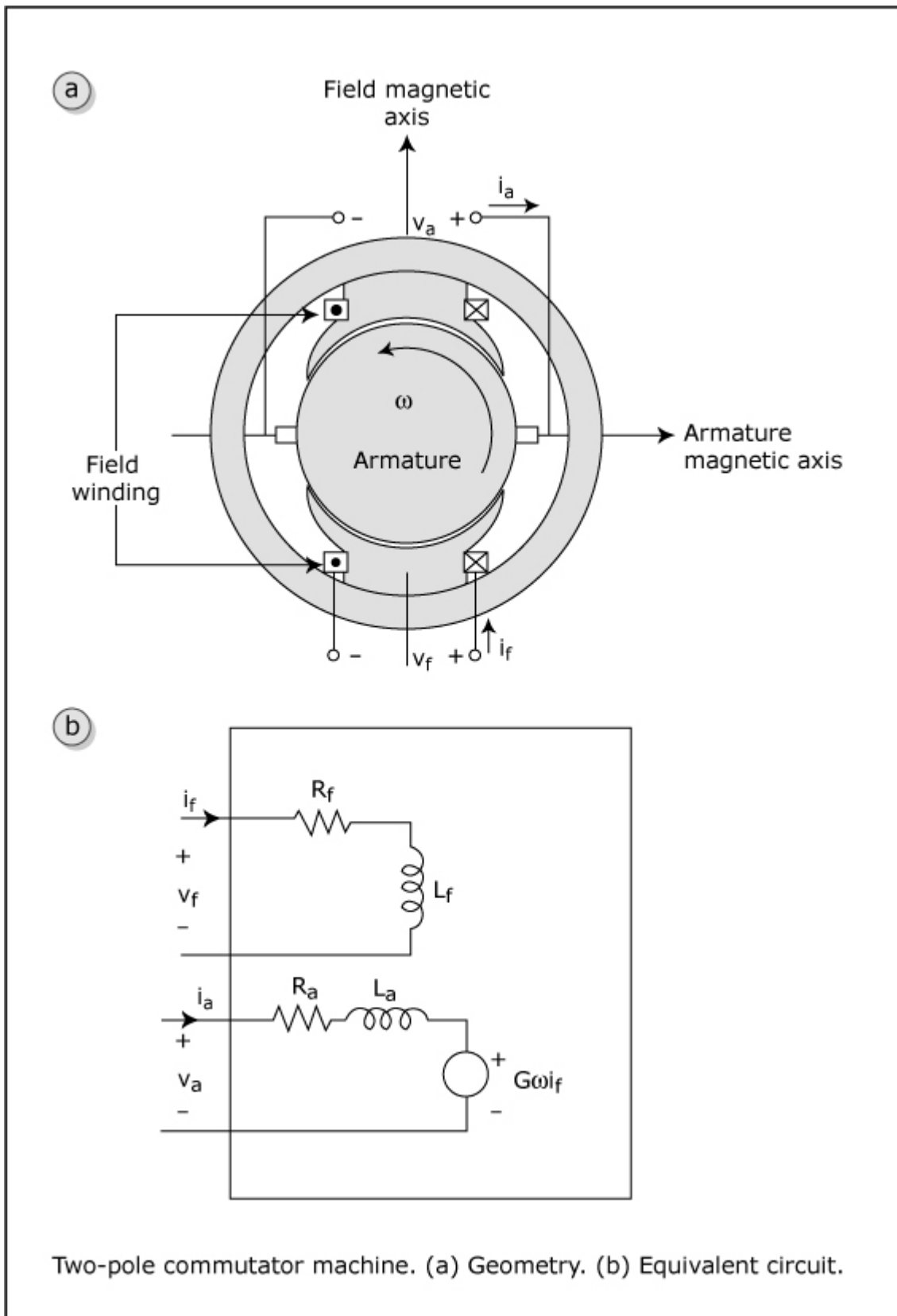
$$i_t = \frac{v_t}{(R_f + R_a + G\omega)}$$

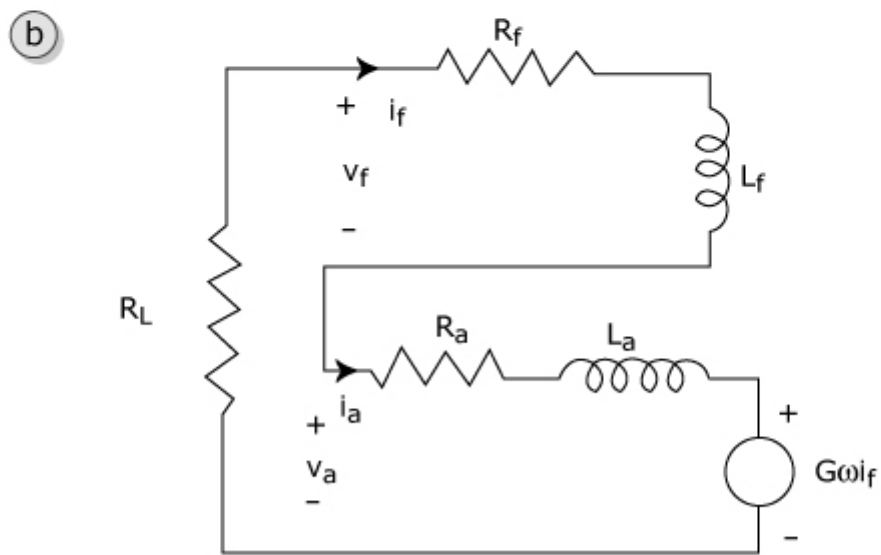
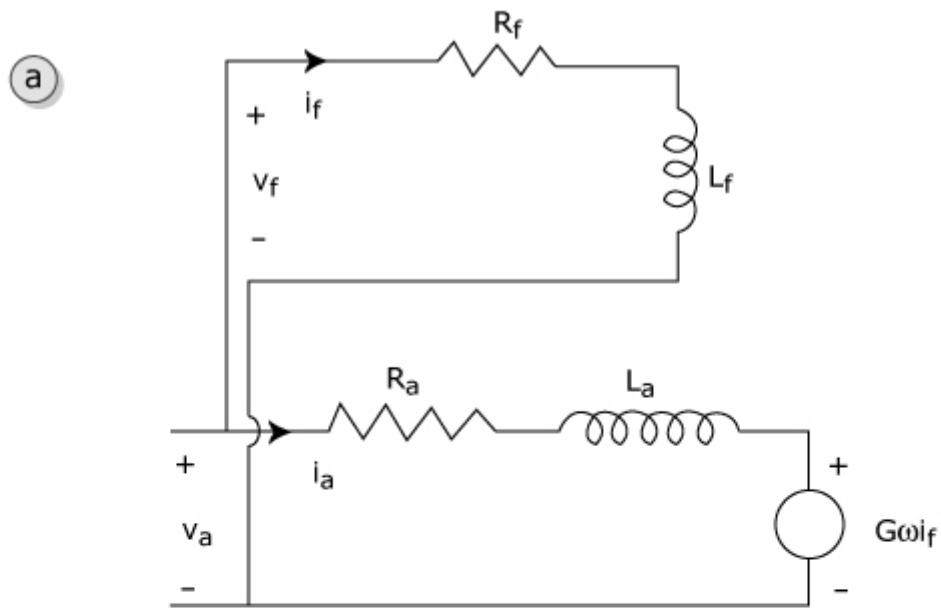
$$T = G i_t^2 = G \frac{v_t^2}{(R_f + R_a + G\omega)^2}$$

XI. Self-Excited Machines



Methods of self-exciting a dc motor: (a) shunt excitation; (b) series excitation.

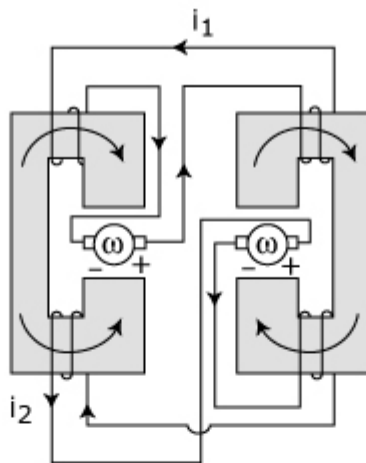




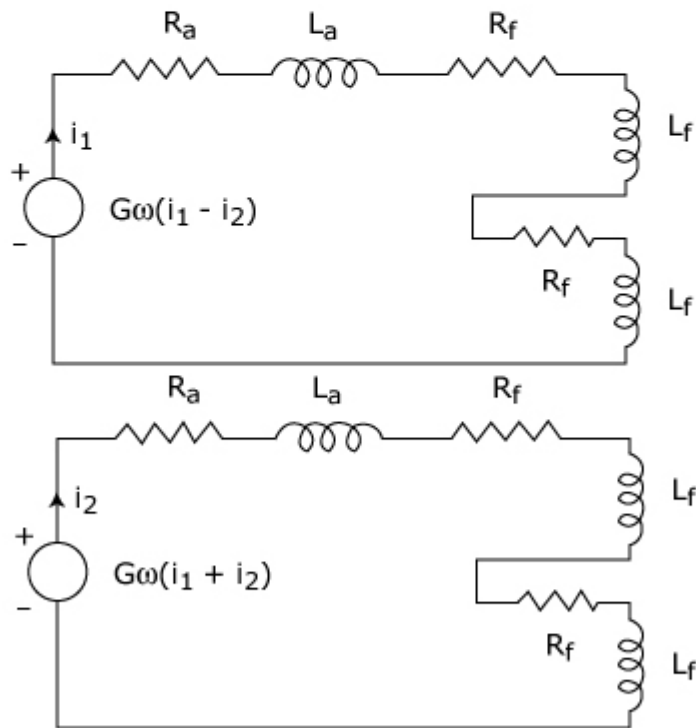
Equivalent circuit models for shunt and series self-excited generators. (a) Open-circuit shunt. (b) Series with load resistor.



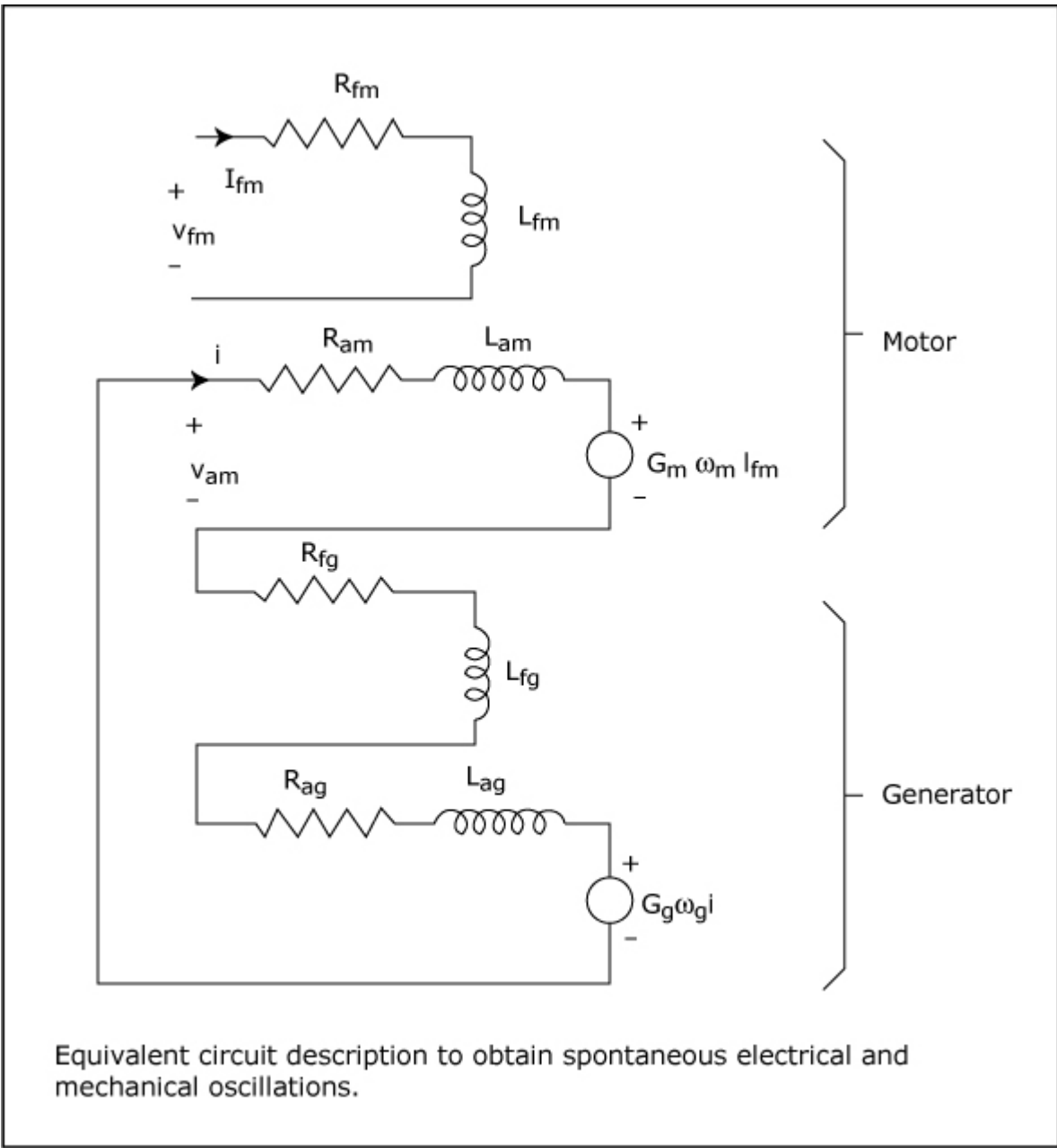
(a)



(b)

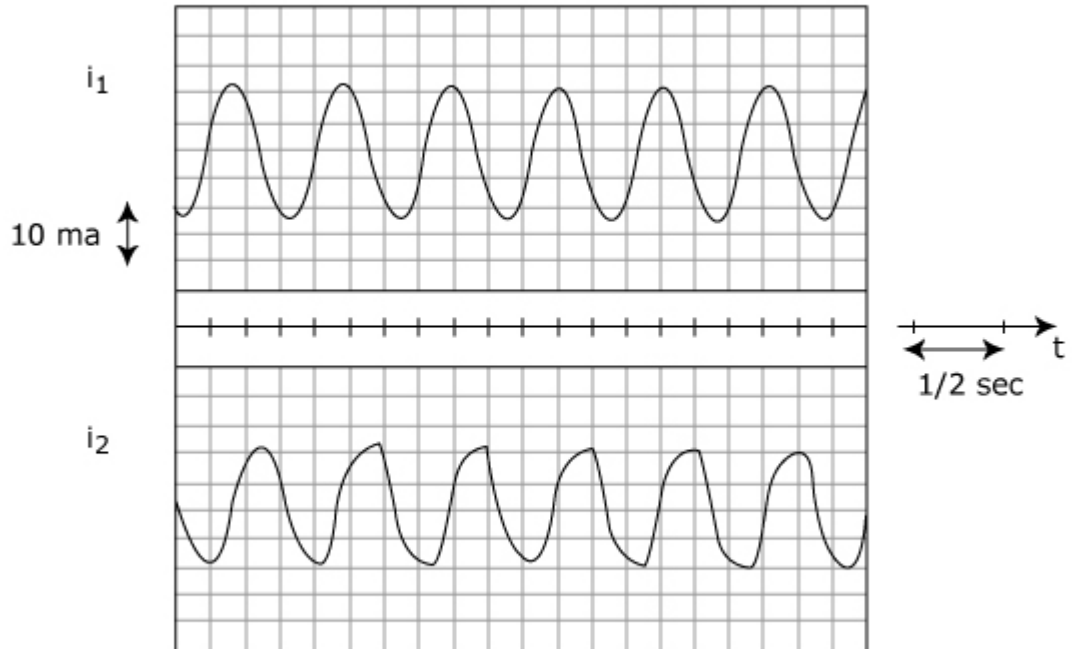


Configuration for obtaining a.c. power from two identical generators. (a) Wiring configuration. (b) Equivalent circuit description.

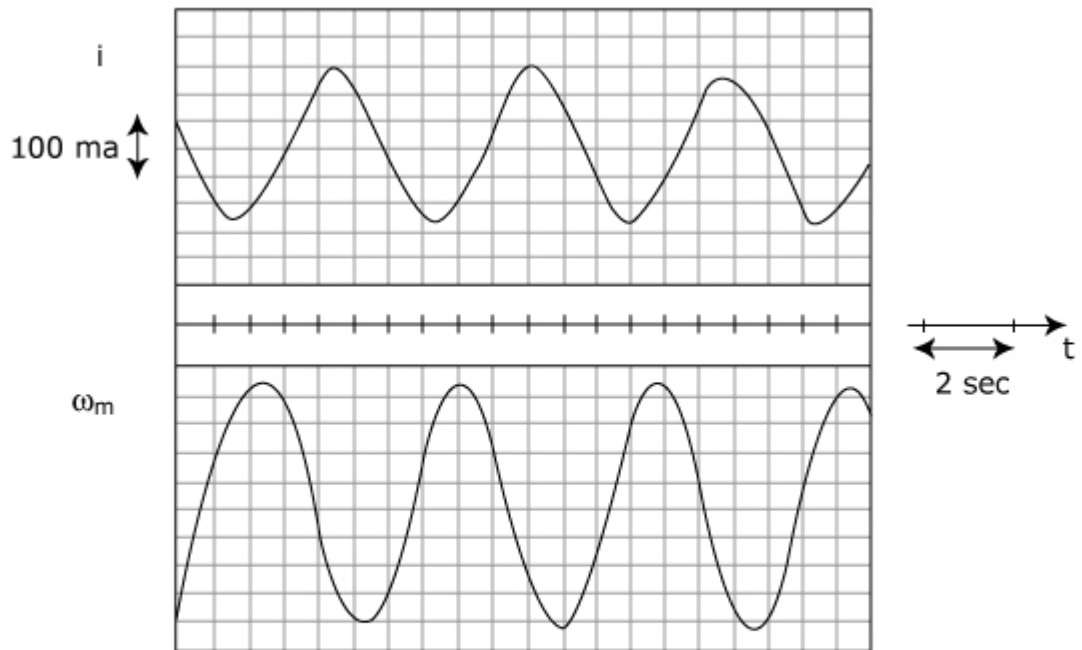


Equivalent circuit description to obtain spontaneous electrical and mechanical oscillations.

(a)



(b)



(a) Two-phase currents obtained from a pair of coupled d.c. machines rotating at a speed of 1790 rev/min. (b) Alternating current and speed for the coupled motor-generator combination with  $I_f = 0.15$  A and generator shaft speed of 1620 rev/min.